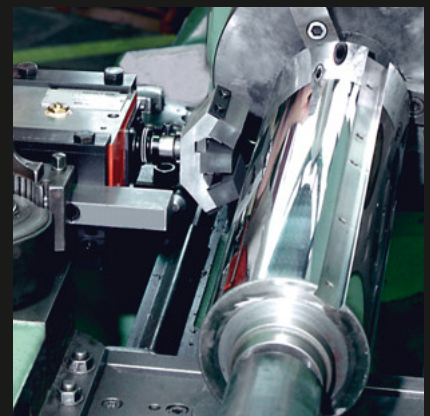


Mechanical superfinishing device for mounting to medium and large base machines to provide superfinishing of ground and fine-turned surfaces. This unit is well suited for machining rolls to a mirror finish.



Superfinishing Attachment 300

Superfinishing Attachment 300

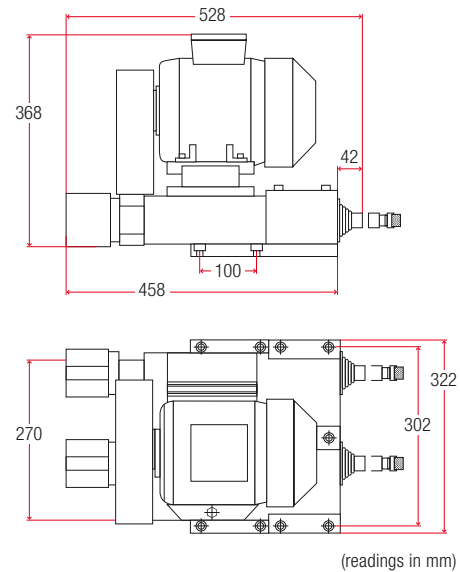
supfina

The 300/301 series superfinishing attachments are designed specifically for intensive, non-stop or multi-shift use. Oscillation is generated mechanically by means of twin eccentric mechanisms, which result in remarkably quiet operation. The permanent oscillation amplitude remains constant even under load alternation.

The pneumatically controlled stone guide system is integrated in the sturdy cast iron housing and the contact pressure of the superfinishing stone can be finely adjusted. Wear of the superfinishing stone is automatically compensated by the machine.

Technical specifications	Supfina 300
Frequency DH/min, max	2200
Amplitude in mm	±2.5
Air pressure in bar	1 – 6
Weight in kg	85
Clamping device in kg	20
Stone guide stroke in mm	25
No. of stone guides	2
Piston surface in cm ²	31
Operating voltage	400 V / 50 Hz
US Version	110 V / 60 Hz
Driving power	1.1 kW

Supfina 300



Accessories



Double and triple stone holders are available upon request, for larger workpiece diameter.



Supfina **guarantees** independent consulting, which considers not only the choice of superfinishing abrasives, but also all factors affecting your production.



Coolant Filter Unit

The superfinishing process requires ample flushing to the work surface. A built in filter ensures that the flushing agent will remain clean.

Engineering with High Precision



www.supfina.com

Supfina Grieshaber GmbH & Co. KG
Schmelzegrün 7 · 77709 Wolfach / Germany
Phone +49 7834 866-0 · Fax +49 7834 866-200
info@supfina.com